

State of Wyoming Corner Record

(In compliance with the CORNER PERPETUATION AND FILING ACT, Wyoming Statutes, 2013 Section 33-29-901 through 33-29-910, and the Rules and Regulations of the Board of Professional Engineers and Professional Land Surveyors)

Reverse side of this form may be used if more space is needed.

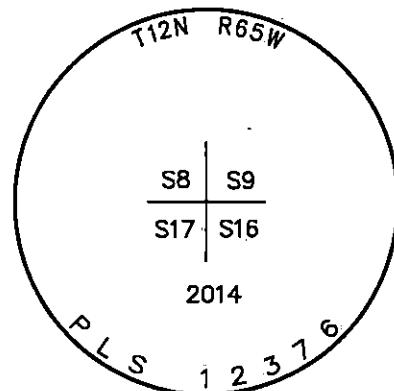
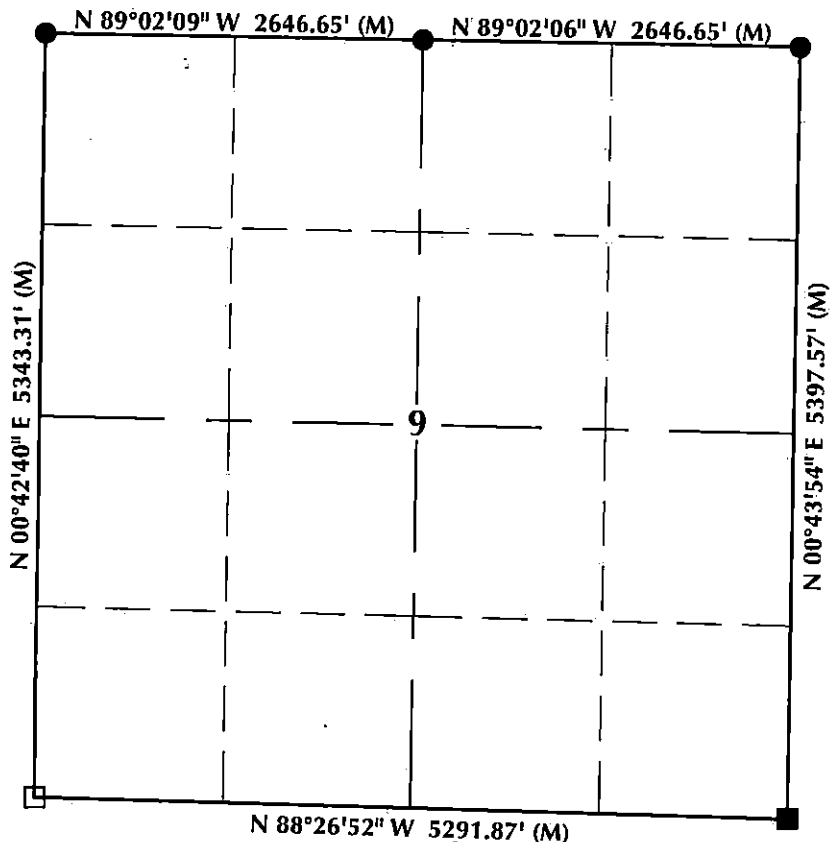
Record of original survey and citation of source of historical information (if corner is lost or obliterated). Description of corner monumentation evidence found and/or monument and accessories established to perpetuate the location of this corner. Sketch of relative location of monument, accessories, and reference points with course and distance to adjacent corner(s) (if determined in this survey). Method and rationale for reestablishment of lost or obliterated corner.

FOUND: 2 1/2" aluminum cap, stamped LS 12376 on #5 rebar, flush with the surface of the ground, adjacent to the Eastern most fence corner in a fence jog, with fence lines extending North and West.

SET: Nothing.

Monument Location

Monument Inscription



NOTES:

1. ▲ INDICATES FOUND BRASS CAP
2. ● INDICATES FOUND ALUMINUM CAP
3. ◆ INDICATES SET ALUMINUM CAP
4. ■ INDICATES FOUND STONE
5. □ INDICATES SECTION CORNER PER CORNER RECORD
6. BASIS OF BEARING DERIVED FROM WYOMING COORDINATE SYSTEM NAD83 EAST ZONE
7. ALL MEASURED DISTANCES ARE GRID
8. DRAWING NOT TO SCALE

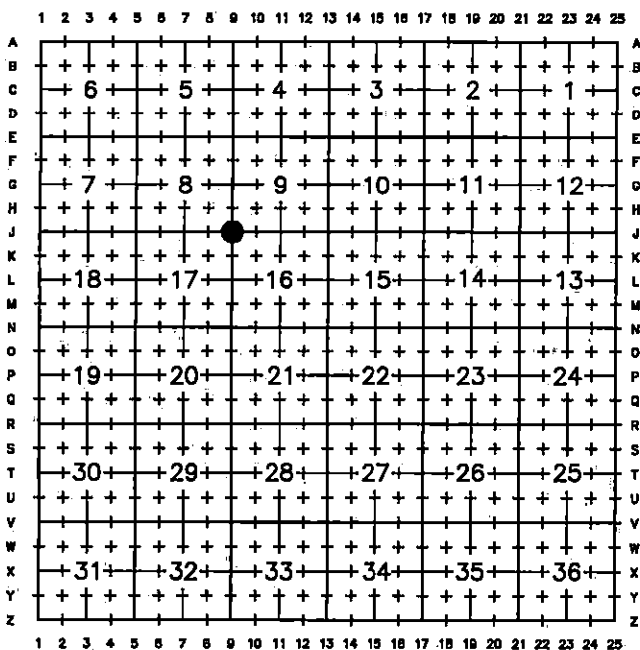


Date of Field Work: 2/7/2022

Office Reference: 22-10

K:\ANADARKO\SURVEY BASE MAP\WY83-E\CORNER RECORDS\T12N_R65W\DRAWN CORNERS\J-9_12N65W.dwg, 5/5/2022 2:07:34 PM, randy

Cross Index Plat



This corner record was prepared by me or under my direction and supervision.

609 Consulting, LLC
1095 Saberton Avenue
Sheridan, WY 82801
 Telephone Number: 307-674-0609

RECP #: 837727
 RECORDED 5/24/2022 AT 1:04 PM BK# 2789 PG# 1503
 Debra K. Lee, CLERK OF LARAMIE COUNTY, WY PAGE 1 OF 1

Corner Name: Southwest Corner Section 9, T12N, R65W, 6th P.M. County: Laramie, Wyoming

WBPEPLS/PLSW: March 1994; PLSW January 1998, January 2019

Cross-Index No.: J-9